

NOTES & FEATURES

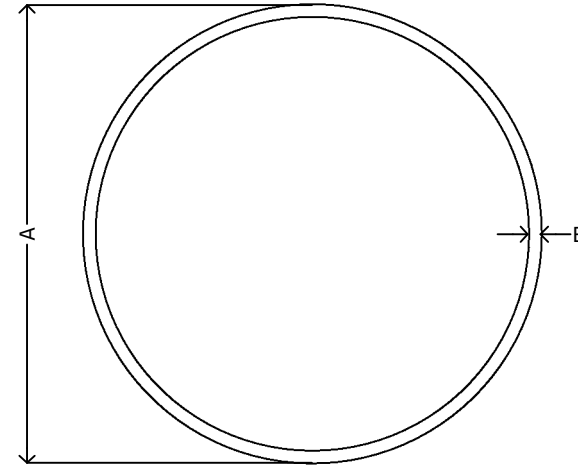
MATERIAL: STAINLESS STEEL
 GRADE: 304/304L & 316/316L
 STANDARD: EN10312/EN10217-7
 SURFACE FINISH: 180g, NON ANNEALED, NON PICKLED
 PRESSURE RATING: UNAVAILABLE (1)

ERRORS & OMISSIONS EXCEPTED
 ALL MEASUREMENTS IN MM UNLESS STATED OTHERWISE

FEATURES:
 6.0 METER LENGTHS, PURCHASE PER METER.
 SUITABLE FOR ALL USES EXCEPT FOR WITH POTABLE WATER. FOR
 POTABLE WATER CAPABILITIES, PLEASE SEE OUR RAPIDPRESS INOX
 WATERMARK APPROVED PRESS-FIT TUBE

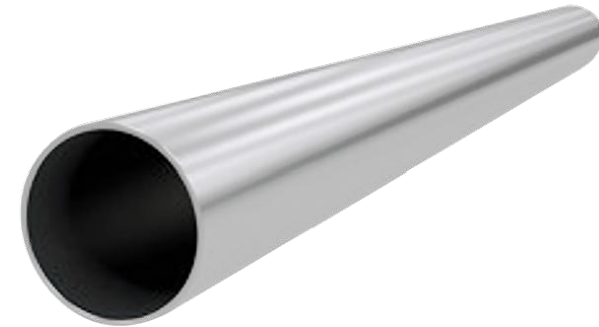
(1) PRESSURE OF RAPIDPRESS INOX PRESS-FIT TUBE IS NOT PRESSURE
 TESTED AS THE MAXIMUM PRESSURE OF THE PRESS-FIT SYSTEM AS
 A WHOLE SHOULD BE BASED AROUND THE RATINGS OF THE SEALS
 THAT ARE BEING USED.

[VIEW ONLINE](#)



DIMENSIONS

CODE	GRADE	METRIC	INCH	A	TOL	B	TOL	VOLUME l/m
RPT415	304/304L	15.0x1.0	0.59"	15.0	±0.10	1.0	±0.20	0.133
RPT422	304/304L	22.0x1.2	0.86"	22.0	±0.11	1.2	±0.20	0.302
RPT428	304/304L	28.0x1.2	1.10"	28.0	±0.14	1.2	±0.20	0.514
RPT435	304/304L	35.0x1.5	1.37"	35.0	±0.17	1.5	±0.20	0.804
RPT442	304/304L	42.0x1.5	1.65"	42.0	±0.21	1.5	±0.20	1.194
RPT454	304/304L	54.0x1.5	2.12"	54.0	±0.27	1.5	±0.20	2.042
RPT476	304/304L	76.1x2.0	2.99"	76.1	±0.38	2.0	±0.20	4.080
RPT488	304/304L	88.9x2.0	3.50"	88.9	±0.44	2.0	±0.20	5.660
RPT4108	304/304L	108.0x2.0	4.25"	108.0	±0.54	2.0	±0.20	8.490
RPT615	316/316L	15.0x1.0	0.59"	15.0	±0.10	1.0	±0.20	0.133
RPT622	316/316L	22.0x1.2	0.86"	22.0	±0.11	1.2	±0.20	0.302
RPT628	316/316L	28.0x1.2	1.10"	28.0	±0.14	1.2	±0.20	0.514
RPT635	316/316L	35.0x1.5	1.37"	35.0	±0.17	1.5	±0.20	0.804
RPT642	316/316L	42.0x1.5	1.65"	42.0	±0.21	1.5	±0.20	1.194
RPT654	316/316L	54.0x1.5	2.12"	54.0	±0.27	1.5	±0.20	2.042
RPT676	316/316L	76.1x2.0	2.99"	76.1	±0.38	2.0	±0.20	4.080
RPT688	316/316L	88.9x2.0	3.50"	88.9	±0.44	2.0	±0.20	5.660
RPT6108	316/316L	108.0x2.0	4.25"	108.0	±0.54	2.0	±0.20	8.490
RPT6168	316/316L	168.3x2.0	6.62"	168.3	±0.84	2.0	±0.20	8.328



<p>THE METAL COMPANY TALK: 0508 304 316 VIEW: www.themetalcompany.co.nz TYPE: sales@themetalcompany.co.nz VISIT: 149 Alabama Rd, Blenheim 7201, NZ</p>	FILE NAME	TMC-RPT.DWG		CODE	RPT	SIZE	15 (0.59") TO 168.3 (6.62")
	AUTHOR	CALEB G. - 07/12/23	FOR	THE METAL COMPANY		DESCRIPTION	STAINLESS STEEL RAPIDPRESS INOX PRESS-FIT TUBE EN10312/EN10217-7
	APPROVED	BRENTLY F. - 05/02/24	CO.	S. FISHER & SONS		REVISION	1.0
	SHEET	A4	SCALE	NOT TO SCALE			