

NOTES & FEATURES

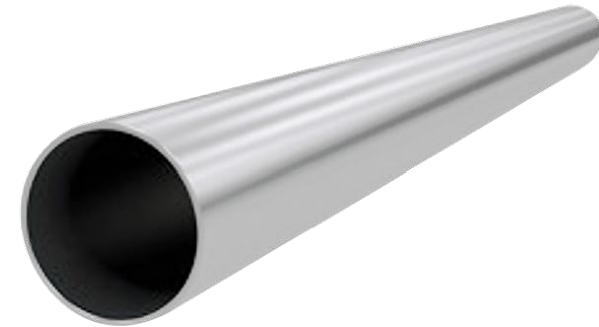
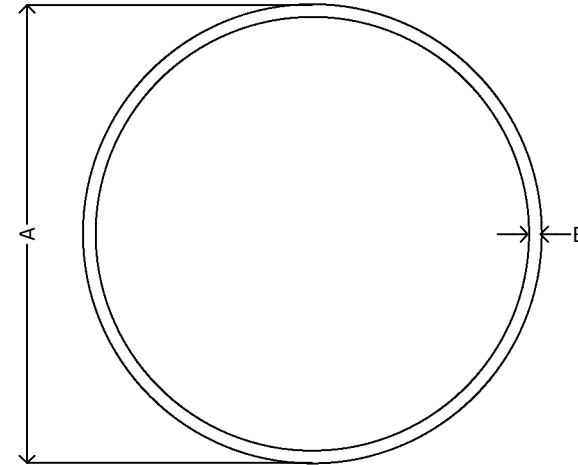
MATERIAL: STAINLESS STEEL
 GRADE: 316L
 STANDARD: EN10312/EN10217-7
 SURFACE FINISH: 180g, ANNEALED, NON PICKLED
 PRESSURE RATING: UNAVAILABLE (1)

ERRORS & OMISSIONS EXCEPTED
 ALL MEASUREMENTS IN MM UNLESS STATED OTHERWISE

FEATURES:
 6.0 METER LENGTHS, PURCHASE PER METER.
 THIS TUBE HAS BEEN WATERMARK APPROVED, AND IS SUITABLE FOR USE WITH POTABLE WATER APPLICATIONS.

(1) PRESSURE OF RAPIDPRESS INOX PRESS-FIT TUBE IS NOT PRESSURE TESTED AS THE MAXIMUM PRESSURE OF THE PRESS-FIT SYSTEM AS A WHOLE SHOULD BE BASED AROUND THE RATINGS OF THE SEALS THAT ARE BEING USED.

[VIEW ONLINE](#)



DIMENSIONS

CODE	GRADE	METRIC	INCH	A	TOL	B	TOL	VOLUME l/m
RPT615WM	316L	15.0x1.0	0.59"	15.0	±0.10	1.0	±0.20	0.133
RPT622WM	316L	22.0x1.2	0.86"	22.0	±0.11	1.2	±0.20	0.302
RPT628WM	316L	28.0x1.2	1.10"	28.0	±0.14	1.2	±0.20	0.514
RPT635WM	316L	35.0x1.5	1.37"	35.0	±0.17	1.5	±0.20	0.804
RPT642WM	316L	42.0x1.5	1.65"	42.0	±0.21	1.5	±0.20	1.194
RPT654WM	316L	54.0x1.5	2.12"	54.0	±0.27	1.5	±0.20	2.042
RPT676WM	316L	76.1x2.0	2.99"	76.1	±0.38	2.0	±0.20	4.080
RPT688WM	316L	88.9x2.0	3.50"	88.9	±0.44	2.0	±0.20	5.660
RPT6108WM	316L	108.0x2.0	4.25"	108.0	±0.54	2.0	±0.20	8.490

<p>THE METAL COMPANY</p> <p>TALK: 0508 304 316 TYPE: sales@themetalscompany.co.nz VISIT: 149 Alabama Rd, Blenheim 7201, NZ</p>	FILE NAME	TMC-RPTWM.DWG		CODE	RPTWM	SIZE	15.0 (0.59") TO 108.0 (4.25")
	AUTHOR	CALEB G. - 08/12/23	FOR	THE METAL COMPANY	DESCRIPTION		
	APPROVED	BRENTLY F. - 05/02/24	CO.	S. FISHER & SONS			
	REVISION	1.0	SHEET	A4	SCALE	NOT TO SCALE	