

NOTES & FEATURES

MATERIAL: STAINLESS STEEL
 GRADE: F316L
 STANDARD: AS2129
 MANUFACTURING PROCESS: FORGED TO ASTM A182
 SURFACE FINISH: SPIRAL GROOVE
 WORKING TEMPERATURE: SEE TABLE BELOW (*)
 WORKING PRESSURE: SEE TABLE BELOW (*)

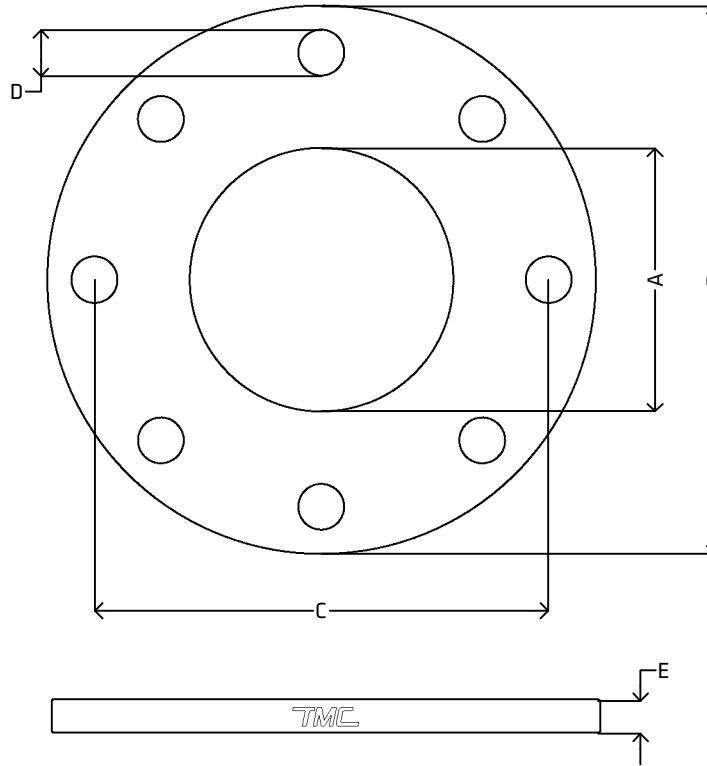
ERRORS & OMISSIONS EXCEPTED
 ALL MEASUREMENTS IN MM UNLESS STATED OTHERWISE

FEATURES:
 ALL SHARP EDGES HAVE BEEN CHAMFERED BY 0.5 MM AT 45°

PLEASE NOTE THAT SIZES 25.4 (1") TO 38.1 (1 1/2") DO NOT MEET AS2129 THICKNESS. THE THICKNESS HAS BEEN INCREASED TO AVOID UNACCEPTABLE WARPAGE THAT CAN OCCUR AT STANDARD THICKNESS, AS RECOMMENDED IN THE STANDARD. THE FLANGES WILL BE DENOTED WITH "NON STANDARD"

(*) PRESSURE/TEMPERATURE RATINGS:
 MAXIMUM ALLOWABLE HYDROSTATIC TEST PRESSURE: 24 bar
 -200°C TO 100°C: 14 bar
 150°C: 13 bar
 200°C: 12 bar
 250°C TO 300°C: 11 bar
 325°C: 10 bar
 350°C: 9.5 bar
 375°C: 9 bar
 400°C: 8 bar
 425°C: 7 bar

[VIEW ONLINE](#)



DIMENSIONS

CODE	METRIC	INCH	A	B	C	D	E
STF25E	25.4	1"	27.0	115.0	83.0 (±0.75)	4x14.0	10.0 (-0.5, +0.0)
STF30E	31.8	1 1/4"	33.4	120.0	87.0 (±0.75)	4x14.0	10.0 (-0.5, +0.0)
STF40E	38.1	1 1/2"	39.7	135.0	98.0 (±0.75)	4x14.0	10.0 (-0.5, +0.0)
STF50E	50.8	2"	52.4	150.0	114.0 (±0.75)	4x18.0	10.0 (-0.5, +0.0)
STF65E	63.5	2 1/2"	65.1	165.0	127.0 (±0.75)	4x18.0	10.0 (-0.5, +0.0)
STF75E	76.2	3"	77.8	185.0	146.0 (±0.75)	4x18.0	11.0 (-0.5, +0.0)
STF100E	101.6	4"	103.2	215.0	178.0 (±0.75)	8x18.0	13.0 (-0.5, +0.0)
STF125E	127.0	5"	128.6	255.0	210.0 (±0.75)	8x18.0	14.0 (-0.5, +0.0)
STF150E	152.4	6"	154.0	280.0	235.0 (±0.75)	8x22.0	17.0 (-0.5, +0.0)
STF200E	203.2	8"	204.8	335.0	292.0 (±0.75)	8x22.0	19.0 (-0.5, +0.0)

<p>THE METAL COMPANY TALK: 0508 304 316 VIEW: www.themetalcompany.co.nz TYPE: sales@themetalcompany.co.nz VISIT: 149 Alabama Rd, Blenheim 7201, NZ</p>	FILE NAME	TMC-STFE.DWG	CODE	STFE	SIZE	25.4 (1") TO 203.2 (8")
	AUTHOR	CALEB G. - 08/01/24	FOR	THE METAL COMPANY	DESCRIPTION	STAINLESS STEEL TUBE FLANGE TABLE E AS2129 ASTM A182 F316L
	APPROVED	BRENTLY F. - 05/02/24	CO.	S. FISHER & SONS	REVISION	1.0
	SHEET	A4	SCALE	NOT TO SCALE		