

NOTES & FEATURES

MATERIAL: STAINLESS STEEL
 GRADE: F316L
 STANDARD: AS2129
 MANUFACTURING PROCESS: FORGED TO ASTM A182
 SURFACE FINISH: SPIRAL GROOVE
 WORKING TEMPERATURE: SEE TABLE BELOW (*)
 WORKING PRESSURE: SEE TABLE BELOW (*)

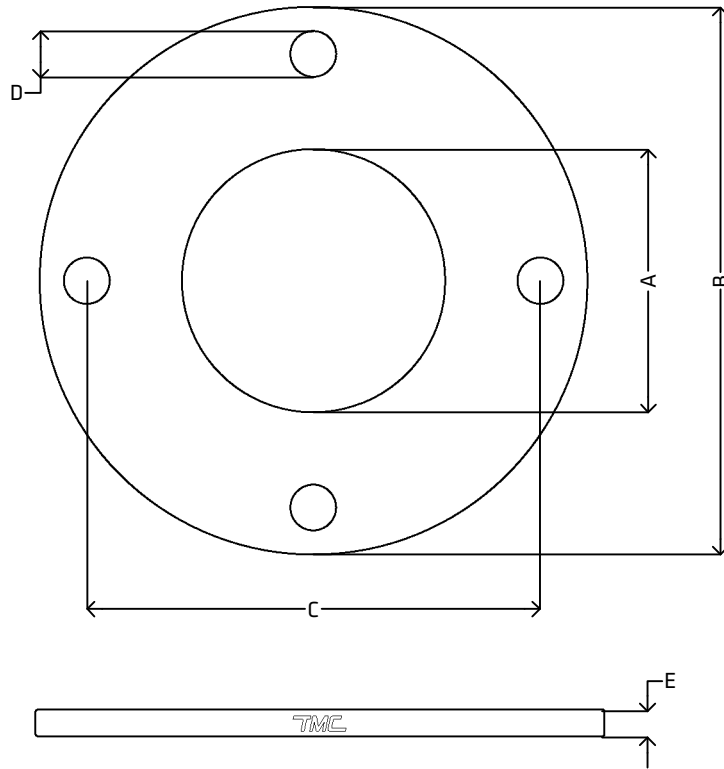
ERRORS & OMISSIONS EXCEPTED
 ALL MEASUREMENTS IN MM UNLESS STATED OTHERWISE

FEATURES:
 ALL SHARP EDGES HAVE BEEN CHAMFERED BY 0.5 MM AT 45°

PLEASE NOTE THAT SIZES 25.4 (1") TO 63.5 (2 1/2") DO NOT MEET AS2129 THICKNESS. THE THICKNESS HAS BEEN INCREASED TO AVOID UNACCEPTABLE WARPAGE THAT CAN OCCUR AT STANDARD THICKNESS. AS RECOMMENDED IN THE STANDARD, THE FLANGES WILL BE DENOTED WITH "NON STANDARD"

(*) PRESSURE/TEMPERATURE RATINGS:
 MAXIMUM ALLOWABLE HYDROSTATIC TEST PRESSURE: 12 bar
 -200°C TO 100°C: 7 bar
 150°C: 6.5 bar
 200°C: 6 bar
 250°C TO 325°C: 5.5 bar
 350°C: 5 bar
 375°C: 4.5 bar
 400°C: 4 bar
 425°C: 3.5 bar

[VIEW ONLINE](#)



DIMENSIONS

CODE	METRIC	INCH	A	B	C	D	E
STF25D	25.4	1"	27.0	115.0	83.0 (±0.75)	4x14.0	10.0 (-0.5, +0.0)
STF30D	31.8	1 1/4"	33.4	120.0	87.0 (±0.75)	4x14.0	10.0 (-0.5, +0.0)
STF40D	38.1	1 1/2"	39.7	135.0	98.0 (±0.75)	4x14.0	10.0 (-0.5, +0.0)
STF50D	50.8	2"	52.4	150.0	114.0 (±0.75)	4x18.0	10.0 (-0.5, +0.0)
STF65D	63.5	2 1/2"	65.1	165.0	127.0 (±0.75)	4x18.0	10.0 (-0.5, +0.0)
STF75D	76.2	3"	77.8	185.0	146.0 (±0.75)	4x18.0	10.0 (-0.5, +0.0)
STF100D	101.6	4"	103.2	215.0	178.0 (±0.75)	4x18.0	10.0 (-0.5, +0.0)
STF125D	127.0	5"	128.6	255.0	210.0 (±0.75)	8x18.0	13.0 (-0.5, +0.0)
STF150D	152.4	6"	154.0	280.0	235.0 (±0.75)	8x18.0	13.0 (-0.5, +0.0)

<p>THE METAL COMPANY TALK: 0508 304 316 TYPE: sales@themetalscompany.co.nz VISIT: 149 Alabama Rd, Blenheim 7201, NZ</p>	FILE NAME	TMC-STFD.DWG	CODE	STFD	SIZE	25.4 (1") TO 152.4 (6")
	AUTHOR	CALEB G. - 08/01/24	FOR	THE METAL COMPANY	DESCRIPTION	
	APPROVED	BRENTLY F. - 05/02/24	CO.	S. FISHER & SONS		
	REVISION	1.0	SHEET	A4	SCALE	NOT TO SCALE