

NOTES & FEATURES

MATERIAL: STAINLESS STEEL
 GRADE: 1.4404
 STANDARD: EN1092-1 (TYPE 01/A)
 MANUFACTURING PROCESS: FORGED TO EN10222-5
 SURFACE FINISH: SPIRAL GROOVE
 WORKING TEMPERATURE: SEE TABLE BELOW (*)
 WORKING PRESSURE: SEE TABLE BELOW (*)

ERRORS & OMISSIONS EXCEPTED
 ALL MEASUREMENTS IN MM UNLESS STATED OTHERWISE

FEATURES:
 ALL SHARP EDGES HAVE BEEN CHAMFERED BY 0.5 MM AT 45°

(*) PRESSURE/TEMPERATURE RATINGS: (MAXIMUM ALLOWABLE TEMPERATURE/MAXIMUM ALLOWABLE PRESSURE)

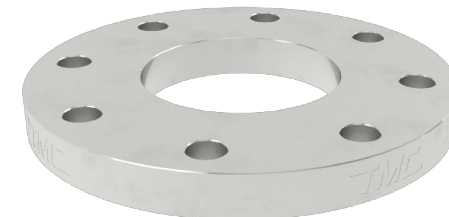
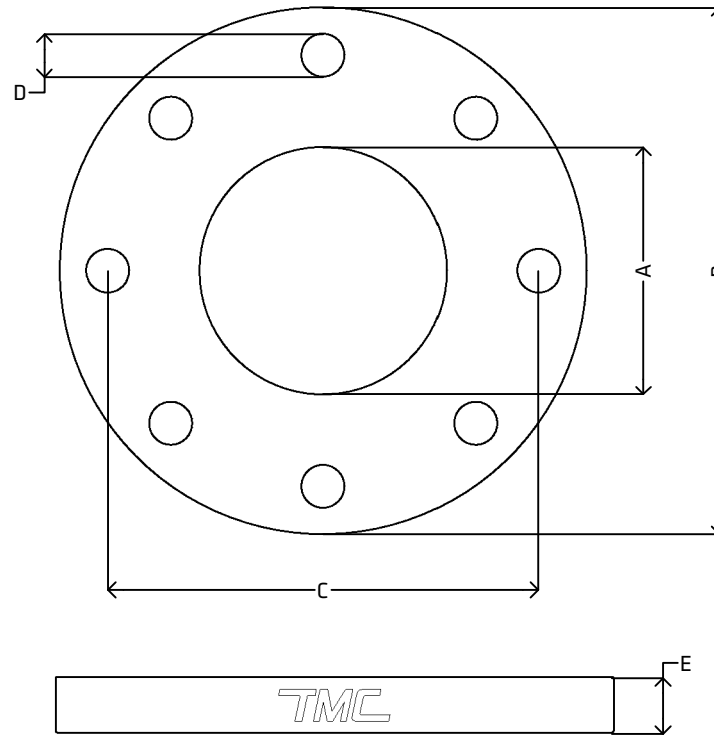
FLANGES RATED UP TO PN16:

RT: 16 bar
 100°C: 15.1 bar
 150°C: 13.7 bar
 200°C: 12.7 bar
 250°C: 11.9 bar
 300°C: 11 bar
 350°C: 10.5 bar
 400°C: 10.2 bar
 450°C: 10 bar
 500°C: 9.7 bar

FLANGES RATED UP TO PN40:

RT: 40 bar
 100°C: 37.9 bar
 150°C: 34.4 bar
 200°C: 31.8 bar
 250°C: 29.9 bar
 300°C: 27.6 bar
 350°C: 26.4 bar
 400°C: 25.7 bar
 450°C: 25 bar
 500°C: 24.3 bar

[VIEW ONLINE](#)



DIMENSIONS

CODE	METRIC	INCH	RATING	A	B	C	D	E
STF25PN10-40	25.4	1"	PN10/16/40	27.0 (-0.0, +0.5)	115.0 (±2.0)	85.0 (±1.0)	4x14.0 (-0.0, +1.0)	16.0 (-1.3, +1.0)
STF30PN10-40	31.8	1 1/4"	PN10/16/40	33.4 (-0.0, +0.5)	140.0 (±2.0)	100.0 (±1.0)	4x18.0 (-0.0, +1.0)	18.0 (-1.3, +1.0)
STF40PN10-40	38.1	1 1/2"	PN10/16/40	39.7 (-0.0, +0.5)	150.0 (±2.0)	110.0 (±1.0)	4x18.0 (-0.0, +1.0)	18.0 (-1.3, +1.0)
STF50PN10-16	50.8	2"	PN10/16	52.4 (-0.0, +0.5)	165.0 (±2.0)	125.0 (±1.0)	4x18.0 (-0.0, +1.0)	20.0 (±1.5)
STF65PN10-16	63.5	2 1/2"	PN10/16	65.1 (-0.0, +0.5)	185.0 (±2.0)	145.0 (±1.0)	8x18.0 (-0.0, +1.0)	20.0 (±1.5)
STF75PN10-16	76.2	3"	PN10/16	77.8 (-0.0, +0.5)	200.0 (±2.0)	160.0 (±1.0)	8x18.0 (-0.0, +1.0)	20.0 (±1.5)
STF100PN10-16	101.6	4"	PN10/16	103.2 (-0.0, +0.5)	220.0 (±2.0)	180.0 (±1.0)	8x18.0 (-0.0, +1.0)	22.0 (±1.5)
STF125PN10-16	127.0	5"	PN10/16	128.6 (-0.0, +1.0)	250.0 (±2.0)	210.0 (±1.0)	8x18.0 (-0.0, +1.0)	22.0 (±1.5)
STF150PN10-16	152.4	6"	PN10/16	154.0 (-0.0, +1.0)	285.0 (±2.0)	240.0 (±1.0)	8x22.0 (-0.0, +1.0)	24.0 (±1.5)
STF200PN16	203.2	8"	PN16	204.8 (-0.0, +1.0)	340.0 (±3.0)	295.0 (±1.0)	12x22.0 (-0.0, +1.0)	26.0 (±1.5)

<p>THE METAL COMPANY TALK: 0508 304 316 TYPE: sales@themetalscompany.co.nz VISIT: 149 Alabama Rd, Blenheim 7201, NZ</p>	FILE NAME TMC-STFPN.DWG		CODE STF10-40	SIZE 25.4 (1") TO 203.2 (8")
	AUTHOR CALEB G. - 09/01/24	FOR THE METAL COMPANY	DESCRIPTION STAINLESS STEEL TUBE FLANGE PN10/16/40 EN1092-1 TYPE 01/A EN10222-5 1.4404	
	APPROVED BRENTLY F. - 05/02/24	CO. S. FISHER & SONS		
	REVISION 1.0	SHEET A4	SCALE NOT TO SCALE	