

**NOTES & FEATURES**

MATERIAL: STAINLESS STEEL  
 GRADE: F316L  
 STANDARD: ASME B16.5 (FLAT FACED)  
 MANUFACTURING PROCESS: FORGED TO ASTM A182  
 SURFACE FINISH: SPIRAL GROOVE  
 WORKING TEMPERATURE: SEE TABLE BELOW (\*)  
 WORKING PRESSURE: SEE TABLE BELOW (\*)

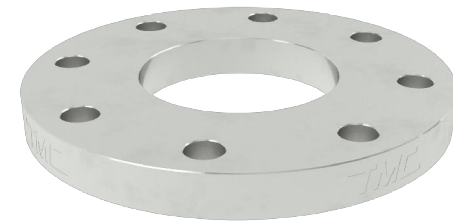
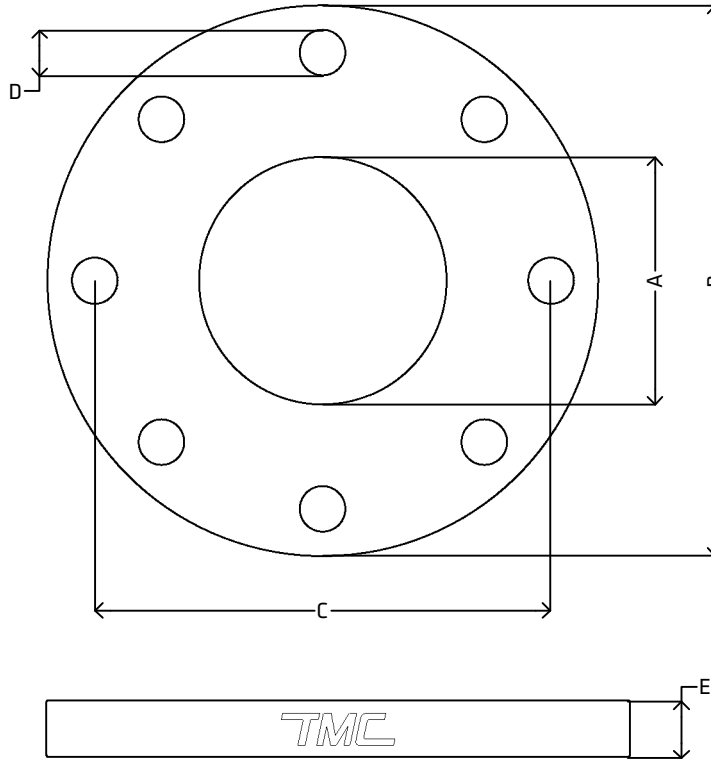
ERRORS & OMISSIONS EXCEPTED  
 ALL MEASUREMENTS IN MM UNLESS STATED OTHERWISE

FEATURES:  
 ALL SHARP EDGES HAVE BEEN CHAMFERED BY 0.5 MM AT 45°

(\*) CLASS 150 RATINGS:

-29°C to 38°C: 15.9 bar  
 50°C: 15.3 bar  
 100°C: 13.3 bar  
 150°C: 12 bar  
 200°C: 11.2 bar  
 250°C: 10.5 bar  
 300°C: 10 bar  
 325°C: 9.3 bar  
 350°C: 8.4 bar  
 375°C: 7.4 bar  
 400°C: 6.5 bar  
 425°C: 5.5 bar  
 450°C: 4.6 bar

[VIEW ONLINE](#)



**DIMENSIONS**

CODE	METRIC	INCH	A	B	C	D	E
STF25A150	25.4	1"	27.0 (-0.0, +1.0)	110.0	79.4 (±0.8)	4x15.88	12.7 (-0.0, +3.0)
STF30A150	31.8	1 1/4"	33.4 (-0.0, +1.0)	115.0	88.9 (±0.8)	4x15.88	14.3 (-0.0, +3.0)
STF40A150	38.1	1 1/2"	39.7 (-0.0, +1.0)	125.0	98.4 (±0.8)	4x15.88	15.9 (-0.0, +3.0)
STF50A150	50.8	2"	52.4 (-0.0, +1.0)	150.0	120.7 (±0.8)	4x19.05	17.5 (-0.0, +3.0)
STF65A150	63.5	2 1/2"	65.1 (-0.0, +1.0)	180.0	139.7 (±0.8)	4x19.05	20.7 (-0.0, +3.0)
STF75A150	76.2	3"	77.8 (-0.0, +1.0)	190.0	152.4 (±0.8)	4x19.05	22.3 (-0.0, +3.0)
STF100A150	101.6	4"	103.2 (-0.0, +1.0)	230.0	190.5 (±0.8)	8x19.05	22.3 (-0.0, +3.0)
STF125A150	127.0	5"	128.6 (-0.0, +1.0)	255.0	215.9 (±0.8)	8x22.22	22.3 (-0.0, +3.0)
STF150A150	152.4	6"	154.0 (-0.0, +1.0)	280.0	241.3 (±0.8)	8x22.22	23.9 (-0.0, +3.0)
STF200A150	203.2	8"	204.8 (-0.0, +1.0)	345.0	298.5 (±0.8)	8x22.22	27.0 (-0.0, +3.0)

<p><b>THE METAL COMPANY</b>                  TALK: 0508 304 316                  VIEW: www.themetalcompany.co.nz                  TYPE: sales@themetalcompany.co.nz                  VISIT: 149 Alabama Rd, Blenheim 7201, NZ</p>	FILE NAME	TMC-STFA150.DWG	CODE	STFA150	SIZE	25.4 (1") TO 203.2 (8")
	AUTHOR	CALEB G. - 09/01/24	FOR	THE METAL COMPANY	DESCRIPTION	
	APPROVED	BRENTLY F. - 05/02/24	CO.	S. FISHER & SONS		
	REVISION	1.0	SHEET	A4	SCALE	NOT TO SCALE