

NOTES & FEATURES

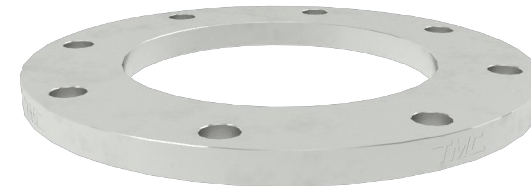
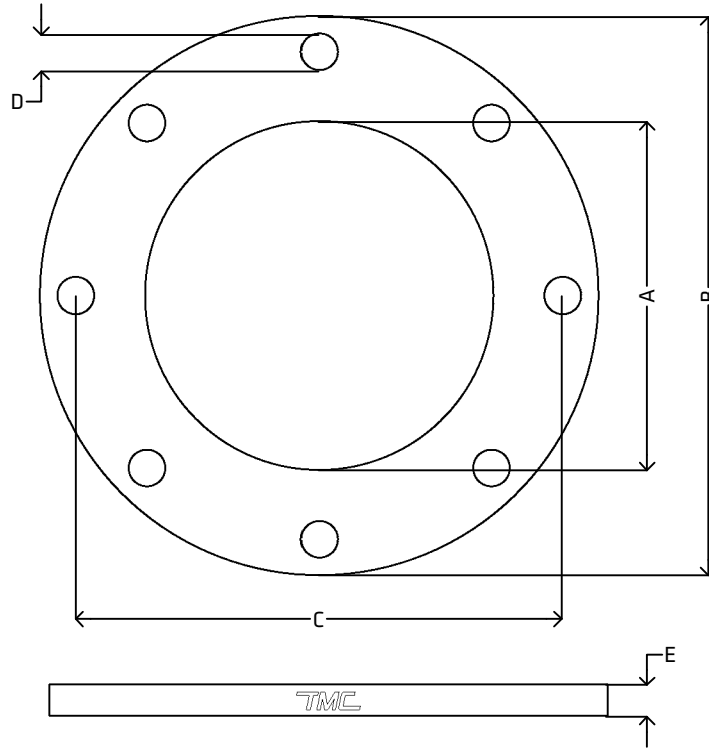
MATERIAL: STAINLESS STEEL
 GRADE: F316L
 STANDARD: AS2129
 MANUFACTURING PROCESS: FORGED TO ASTM A182
 SURFACE FINISH: SPIRAL GROOVE
 WORKING TEMPERATURE: SEE TABLE BELOW (*)
 WORKING PRESSURE: SEE TABLE BELOW (*)

ERRORS & OMISSIONS EXCEPTED
 ALL MEASUREMENTS IN MM UNLESS STATED OTHERWISE

FEATURES:
 ALL SHARP EDGES HAVE BEEN CHAMFERED BY 0.5 MM AT 45°
 SPIRAL WELD TUBE IN NEW ZEALAND IS TYPICALLY MEASURED BY THE INTERNAL DIAMETER. FOR EXAMPLE, 203.2 ID SPIRAL WELD TUBE WITH A WALL THICKNESS OF 2.0 MM WOULD HAVE AN OUTSIDE DIAMETER OF 207.2.

(*) PRESSURE/TEMPERATURE RATINGS: MAXIMUM ALLOWABLE HYDROSTATIC TEST PRESSURE: 24 bar
 -200°C TO 100°C: 14 bar
 150°C: 13 bar
 200°C: 12 bar
 250°C TO 300°C: 11 bar
 325°C: 10 bar
 350°C: 9.5 bar
 375°C: 9 bar
 400°C: 8 bar
 425°C: 7 bar

[VIEW ONLINE](#)



DIMENSIONS

CODE	METRIC	INCH	A	B	C	D	E
SSWF200E	203.2 ID	8"	208.8	355.0	292.0 (±0.75)	8x22.0	19.0 (-0.5, +0.0)
SSWF250E	254.0 ID	10"	259.6	405.0	356.0 (±0.75)	12x22.0	22.0 (-0.5, +0.0)
SSWF300E	304.8 ID	12"	312.4	455.0	406.0 (±0.75)	12x26.0	25.0 (-0.5, +0.0)

<p>THE METAL COMPANY</p> <p>TALK: 0508 304 316 VIEW: www.themetalcompany.co.nz TYPE: sales@themetalcompany.co.nz VISIT: 149 Alabama Rd, Blenheim 7201, NZ</p>	FILE NAME	TMC-SSWFE.DWG		CODE	SSWFE	SIZE	203.2 (8") TO 304.8 (12")
	AUTHOR	CALEB G. - 17/01/24	FOR	THE METAL COMPANY	DESCRIPTION STAINLESS STEEL SPIRAL WELD TUBE FLANGE TABLE E AS2129 ASTM A182 F316L		
	APPROVED	BRENTLY F. - 05/02/24	CO.	S. FISHER & SONS			
	REVISION	1.0	SHEET	A4	SCALE	NOT TO SCALE	