

NOTES & FEATURES

MATERIAL: STAINLESS STEEL
 GRADE: 1.4404
 STANDARD: EN1092-1
 MANUFACTURING PROCESS: FORGED TO EN10222-5
 SURFACE FINISH: SPIRAL GROOVE
 WORKING TEMPERATURE: SEE TABLE BELOW (*)
 WORKING PRESSURE: SEE TABLE BELOW (*)

ERRORS & OMISSIONS EXCEPTED
 ALL MEASUREMENTS IN MM UNLESS STATED OTHERWISE

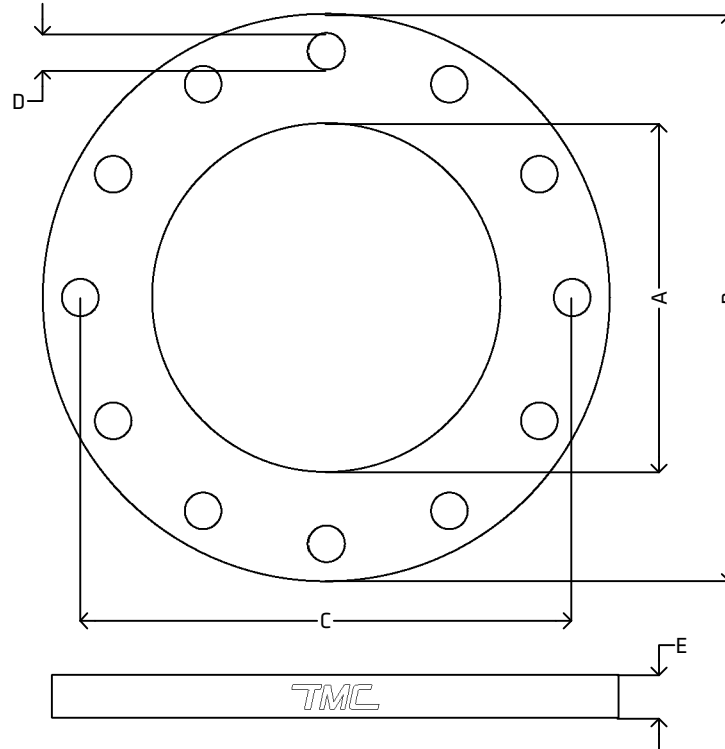
FEATURES:
 ALL SHARP EDGES HAVE BEEN CHAMFERED BY 0.5 MM AT 45°
 SPIRAL WELD TUBE IN NEW ZEALAND IS TYPICALLY MEASURED BY THE INTERNAL DIAMETER. FOR EXAMPLE, 203.2 ID SPIRAL WELD TUBE WITH A WALL THICKNESS OF 2.0 MM WOULD HAVE AN OUTSIDE DIAMETER OF 207.2.

(*) MAXIMUM ALLOWABLE TEMPERATURE/MAXIMUM ALLOWABLE PRESSURE

FLANGES RATED UP TO PN16:

RT: 16 bar
 100°C: 15.1 bar
 150°C: 13.7 bar
 200°C: 12.7 bar
 250°C: 11.9 bar
 300°C: 11 bar
 350°C: 10.5 bar
 400°C: 10.2 bar
 450°C: 10 bar
 500°C: 9.7 bar

[VIEW ONLINE](#)



DIMENSIONS

CODE	METRIC	INCH	RATING	A	B	C	D	E
SSWF200PN16	203.2 ID	8"	PN16	208.8 (-0.0, +1.0)	340.0 (±3.0)	295.0 (±1.0)	12x22.0 (-0.0, +1.0)	26.0 (±1.5)
SSWF250PN16	254.0 ID	10"	PN16	261.6 (-0.0, +1.0)	405.0 (±3.0)	355.0 (±1.0)	12x26.0 (-0.0, +1.0)	29.0 (±1.5)
SSWF300PN16	304.8 ID	12"	PN16	312.4 (-0.0, +1.0)	460.0 (±3.0)	410.0 (±1.0)	12x26.0 (-0.0, +1.0)	32.0 (±1.5)

<p>THE METAL COMPANY TALK: 0508 304 316 TYPE: sales@themetalscompany.co.nz VISIT: 149 Alabama Rd, Blenheim 7201, NZ</p>	FILE NAME TMC-SSWFPN.DWG		CODE SSWFPN10-40	SIZE 203.2 (8") TO 304.8 (12")
	AUTHOR CALEB G. - 17/01/24	FOR THE METAL COMPANY	DESCRIPTION STAINLESS STEEL SPIRAL WELD TUBE FLANGE PN16 EN1092-1 EN10222-5 1.4404	
	APPROVED BRENTLY F. - 05/02/24	CO. S. FISHER & SONS		
	REVISION 1.0	SHEET A4		