

NOTES & FEATURES

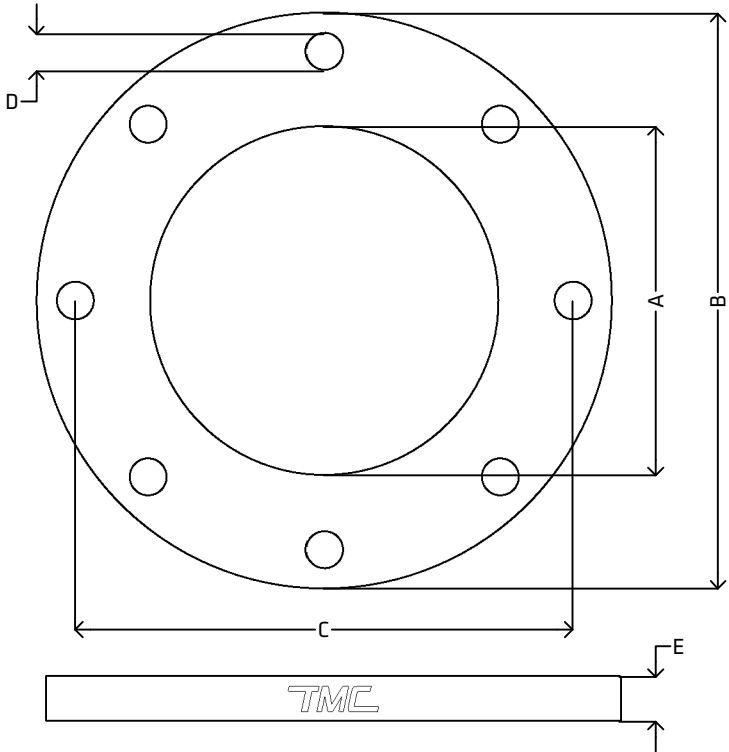
MATERIAL: STAINLESS STEEL  
GRADE: F316L  
STANDARD: ASME B16.5  
MANUFACTURING PROCESS: FORGED TO ASTM A182  
SURFACE FINISH: SPIRAL GROOVE  
WORKING TEMPERATURE: SEE TABLE BELOW (\*)  
WORKING PRESSURE: SEE TABLE BELOW (\*)

ERRORS & OMISSIONS EXCEPTED  
ALL MEASUREMENTS IN MM UNLESS STATED OTHERWISE

FEATURES:  
ALL SHARP EDGES HAVE BEEN CHAMFERED BY 0.5 MM AT 45°  
SPIRAL WELD TUBE IN NEW ZEALAND IS TYPICALLY  
MEASURED BY THE INTERNAL DIAMETER. FOR EXAMPLE,  
203.2 ID SPIRAL WELD TUBE WITH A WALL THICKNESS OF 2.0  
MM WOULD HAVE AN OUTSIDE DIAMETER OF 207.2.


(\*) CLASS 150 RATINGS:  
-29°C to 38°C: 15.9bar  
50°C: 15.9bar  
100°C: 13.3bar  
150°C: 12bar  
200°C: 11.2bar  
250°C: 10.5bar  
300°C: 10bar  
325°C: 9.3bar  
350°C: 8.4bar  
375°C: 7.4bar  
400°C: 6.5bar  
425°C: 5.5bar  
450°C: 4.6bar

VIEW ONLINE



DIMENSIONS

CODE	METRIC	INCH	A	B	C	D	E
SSWF200A150	203.2 ID	8"	208.8 (-0.0, +1.0)	340.0	295.0 (±1.5)	12x22.0	26.0 (-0.0, +3.0)
SSWF250A150	254.0 ID	10"	261.6 (-0.0, +1.0)	405.0	355.0 (±1.5)	12x26.0	29.0 (-0.0, +3.0)
SSWF300A150	304.8 ID	12"	312.4 (-0.0, +1.5)	460.0	410.0 (±1.5)	12x26.0	32.0 (-0.0, +3.0)

 THEMETALCOMPANY  TALK: 0508 304 316 VIEW: <a href="http://www.themetalcompany.co.nz">www.themetalcompany.co.nz</a> TYPE: <a href="mailto:sales@themetalcompany.co.nz">sales@themetalcompany.co.nz</a> VISIT: 149 Alabama Rd, Blenheim 7201, NZ	FILE NAME TMC-SSWFA150.DWG			CODE SSWFA150	SIZE 203.2 (8") TO 304.8 (12")
	AUTHOR CALEB G. - 18/01/24	FOR THE METAL COMPANY		DESCRIPTION STAINLESS STEEL SPIRAL WELD TUBE FLANGE ANSI150 ASME B16.5 ASTM A182 F316L	
	APPROVED BRENTLY F. - 05/02/24	CO. S. FISHER & SONS			
	REVISION 1.0	SHEET A4	SCALE NOT TO SCALE		