

NOTES & FEATURES

MATERIAL: STAINLESS STEEL
 GRADE: F316L
 STANDARD: ASME B16.5
 MANUFACTURING PROCESS: FORGED TO ASTM A182
 SURFACE FINISH: SPIRAL GROOVE
 WORKING TEMPERATURE: SEE TABLE BELOW (*)
 WORKING PRESSURE: SEE TABLE BELOW (*)

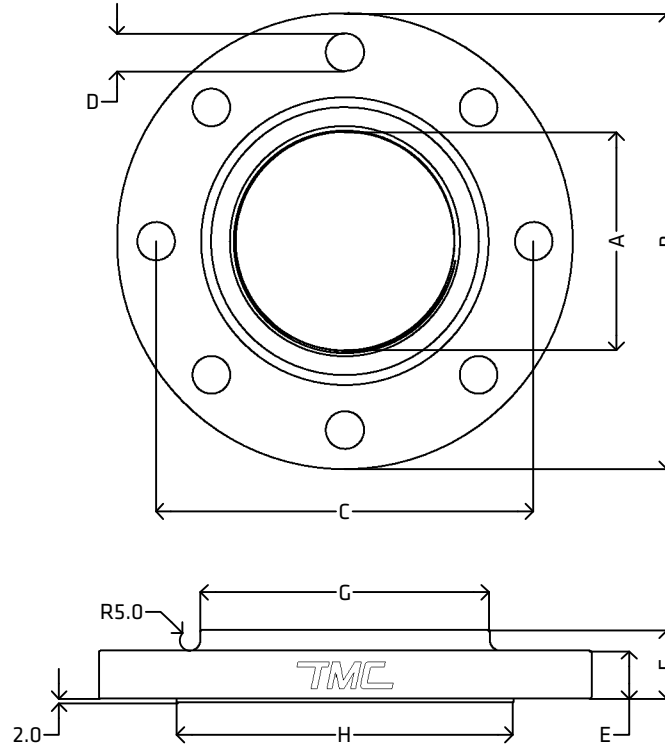
ERRORS & OMISSIONS EXCEPTED
 ALL MEASUREMENTS IN MM UNLESS STATED OTHERWISE

FEATURES:
 ALL SHARP EDGES HAVE BEEN CHAMFERED BY 0.5 MM AT 45°
 BSP THREAD IS PARALLEL (BSPP)

(*) CLASS 150 RATINGS:

-29°C to 38°C: 15.9bar
 50°C: 15.3bar
 100°C: 13.3bar
 150°C: 12bar
 200°C: 11.2bar
 250°C: 10.5bar
 300°C: 10bar
 325°C: 9.3bar
 350°C: 8.4bar
 375°C: 7.4bar
 400°C: 6.5bar
 425°C: 5.5bar
 450°C: 4.6bar

[VIEW ONLINE](#)



DIMENSIONS

CODE	METRIC	INCH	A	B	C	D	E	F	G	H
SBSPF25A150	25NB	1"	1" BSP	110.0	79.4 (±1.5)	4x15.88	12.7 (-0.0, +3.0)	16.0	49.0	50.8
SBSPF40A150	40NB	1 1/2"	1 1/2" BSP	125.0	98.4 (±1.5)	4x15.88	15.9 (-0.0, +3.0)	21.0	65.0	73.0
SBSPF50A150	50NB	2"	2" BSP	150.0	120.7 (±1.5)	4x19.05	17.5 (-0.0, +3.0)	24.0	78.0	92.1
SBSPF80A150	80NB	3"	3" BSP	190.0	152.4 (±1.5)	4x19.05	22.3 (-0.0, +3.0)	29.0	108.0	127.0
SBSPF100A150	100NB	4"	4" BSP	230.0	190.5 (±1.5)	8x19.05	22.3 (-0.0, +3.0)	32.0	135.0	157.2

<p>THE METAL COMPANY</p> <p>TALK: 0508 304 316 VIEW: www.themetalcompany.co.nz TYPE: sales@themetalcompany.co.nz VISIT: 149 Alabama Rd, Blenheim 7201, NZ</p>	FILE NAME	TMC-SBSPFA150.DWG	CODE	SBSPFA150	SIZE	25NB (1") TO 100NB (4")
	AUTHOR	CALEB G. - 02/02/24	FOR	THE METAL COMPANY	DESCRIPTION STAINLESS STEEL BSP THREADED FLANGE ANSI150 ASME B16.5 ASTM A182 F316L	
	APPROVED	BRENTLY F. - 05/02/24	CO.	S. FISHER & SONS		
	REVISION	1.0	SHEET	A4		