

NOTES & FEATURES

MATERIAL: STAINLESS STEEL
 GRADE: F316L
 STANDARD: AS2129
 MANUFACTURING PROCESS: FORGED TO ASTM A182
 SURFACE FINISH: SPIRAL GROOVE
 WORKING TEMPERATURE: SEE TABLE BELOW (*)
 WORKING PRESSURE: SEE TABLE BELOW (*)

ERRORS & OMISSIONS EXCEPTED
 ALL MEASUREMENTS IN MM UNLESS STATED OTHERWISE

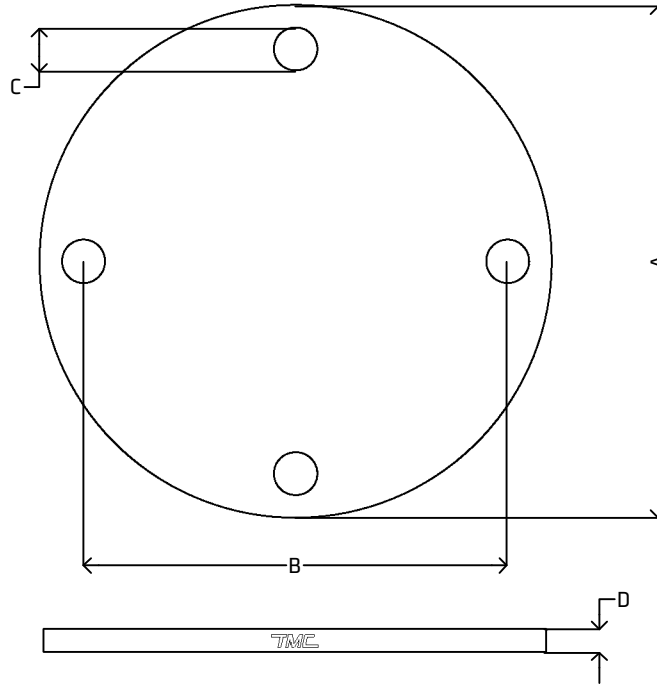
FEATURES:
 ALL SHARP EDGES HAVE BEEN CHAMFERED BY 0.5 MM AT 45°

PLEASE NOTE THAT SIZES 15NB (1/2") TO 65NB (2 1/2") DO NOT MEET AS2129 THICKNESS. THE THICKNESS HAS BEEN INCREASED TO AVOID UNACCEPTABLE WARPAGE THAT CAN OCCUR AT STANDARD THICKNESS. AS RECOMMENDED IN THE STANDARD, THE FLANGES WILL BE DENOTED WITH "NON STANDARD"

(*) PRESSURE/TEMPERATURE RATINGS: MAXIMUM ALLOWABLE HYDROSTATIC TEST PRESSURE: 12 bar

-200°C TO 100°C: 7 bar
 150°C: 6.5 bar
 200°C: 6 bar
 250°C TO 325°C: 5.5 bar
 350°C: 5 bar
 375°C: 4.5 bar
 400°C: 4 bar
 425°C: 3.5 bar

[VIEW ONLINE](#)



DIMENSIONS

CODE	METRIC	INCH	A	B	C	D
SBF15D	15NB	1/2"	95.0	67.0 (±0.75)	4x14.0	10.0 (-0.5, +0.0)
SBF20D	20NB	3/4"	100.0	73.0 (±0.75)	4x14.0	10.0 (-0.5, +0.0)
SBF25D	25NB	1"	115.0	83.0 (±0.75)	4x14.0	10.0 (-0.5, +0.0)
SBF32D	32NB	1 1/4"	120.0	87.0 (±0.75)	4x14.0	10.0 (-0.5, +0.0)
SBF40D	40NB	1 1/2"	135.0	98.0 (±0.75)	4x14.0	10.0 (-0.5, +0.0)
SBF50D	50NB	2"	150.0	114.0 (±0.75)	4x18.0	10.0 (-0.5, +0.0)
SBF65D	65NB	2 1/2"	165.0	127.0 (±0.75)	4x18.0	10.0 (-0.5, +0.0)
SBF80D	80NB	3"	185.0	146.0 (±0.75)	4x18.0	10.0 (-0.5, +0.0)
SBF100D	100NB	4"	215.0	178.0 (±0.75)	4x18.0	10.0 (-0.5, +0.0)
SBF125D	125NB	5"	255.0	210.0 (±0.75)	8x18.0	13.0 (-0.5, +0.0)
SBF150D	150NB	6"	280.0	235.0 (±0.75)	8x18.0	13.0 (-0.5, +0.0)
SBF200D	200NB	8"	335.0	292.0 (±0.75)	8x18.0	13.0 (-0.5, +0.0)
SBF250D	250NB	10"	405.0	356.0 (±0.75)	8x22.0	16.0 (-0.5, +0.0)
SBF300D	300NB	12"	455.0	406.0 (±0.75)	12x22.0	19.0 (-0.5, +0.0)
SBF350D	350NB	14"	525.0	470.0 (±0.75)	12x26.0	22.0 (-0.5, +0.0)
SBF400D	400NB	16"	580.0	521.0 (±0.75)	12x26.0	22.0 (-0.5, +0.0)



<p>THEMETALCOMPANY TALK: 0508 304 316 VIEW: www.themetalcompany.co.nz TYPE: sales@themetalcompany.co.nz VISIT: 149 Alabama Rd, Blenheim 7201, NZ</p>	FILE NAME	TMC-SBFD.DWG	CODE	SBFD	SIZE	15NB (1/2") TO 400NB (16")
	AUTHOR	CALEB G. - 14/02/24	FOR	THE METAL COMPANY	DESCRIPTION	
	APPROVED	BRENTLY F. - 16/02/24	CO.	S. FISHER & SONS		
	REVISION	1.0	SHEET	A4	SCALE	NOT TO SCALE