



**NOTES & FEATURES**

MATERIAL: STAINLESS STEEL  
 GRADE: 1.4404  
 STANDARD: EN1092-1  
 MANUFACTURING PROCESS: FORGED TO EN10222-5  
 SURFACE FINISH: SPIRAL GROOVE  
 WORKING TEMPERATURE: SEE TABLE BELOW (\*)  
 WORKING PRESSURE: SEE TABLE BELOW (\*)

ERRORS & OMISSIONS EXCEPTED  
 ALL MEASUREMENTS IN MM UNLESS STATED OTHERWISE

FEATURES:  
 ALL SHARP EDGES HAVE BEEN CHAMFERED BY 0.5 MM AT 45°

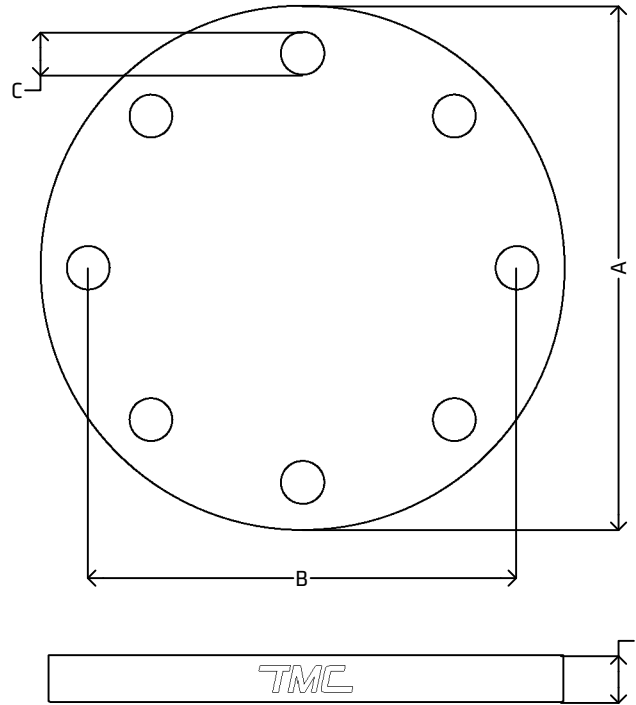
(\*) PRESSURE/TEMPERATURE RATINGS: (MAXIMUM ALLOWABLE TEMPERATURE/MAXIMUM ALLOWABLE PRESSURE)

**FLANGES RATED UP TO PN16:**

RT: 16 bar  
 100°C: 15.1 bar  
 150°C: 13.7 bar  
 200°C: 12.7 bar  
 250°C: 11.9 bar  
 300°C: 11 bar  
 350°C: 10.5 bar  
 400°C: 10.2 bar  
 450°C: 10 bar  
 500°C: 9.7 bar

**FLANGES RATED UP TO PN40:**

RT: 40 bar  
 100°C: 37.9 bar  
 150°C: 34.4 bar  
 200°C: 31.8 bar  
 250°C: 29.9 bar  
 300°C: 27.6 bar  
 350°C: 26.4 bar  
 400°C: 25.7 bar  
 450°C: 25 bar  
 500°C: 24.3 bar



**DIMENSIONS**

CODE	METRIC	INCH	RATING	A	B	C	D
SBF15PN10-40	15NB	1/2"	PN10/16/40	95.0 (±2.0)	65.0 (±1.0)	4x14.0 (-0.0, +1.0)	16.0 (-1.3, +1.0)
SBF20PN10-40	20NB	3/4"	PN10/16/40	105.0 (±2.0)	75.0 (±1.0)	4x14.0 (-0.0, +1.0)	18.0 (-1.3, +1.0)
SBF25PN10-40	25NB	1"	PN10/16/40	115.0 (±2.0)	85.0 (±1.0)	4x14.0 (-0.0, +1.0)	18.0 (-1.3, +1.0)
SBF32PN10-40	32NB	1 1/4"	PN10/16/40	140.0 (±2.0)	100.0 (±1.0)	4x18.0 (-0.0, +1.0)	18.0 (-1.3, +1.0)
SBF40PN10-40	40NB	1 1/2"	PN10/16/40	150.0 (±2.0)	110.0 (±1.0)	4x18.0 (-0.0, +1.0)	18.0 (-1.3, +1.0)
SBF50PN10-16	50NB	2"	PN10/16	165.0 (±2.0)	125.0 (±1.0)	4x18.0 (-0.0, +1.0)	18.0 (-1.3, +1.0)
SBF65PN10-16	65NB	2 1/2"	PN10/16	185.0 (±2.0)	145.0 (±1.0)	8x18.0 (-0.0, +1.0)	18.0 (-1.3, +1.0)
SBF80PN10-16	80NB	3"	PN10/16	200.0 (±2.0)	160.0 (±1.0)	8x18.0 (-0.0, +1.0)	20.0 (±1.5)
SBF100PN10-16	100NB	4"	PN10/16	220.0 (±2.0)	180.0 (±1.0)	8x18.0 (-0.0, +1.0)	20.0 (±1.5)
SBF125PN10-16	125NB	5"	PN10/16	250.0 (±2.0)	210.0 (±1.0)	8x18.0 (-0.0, +1.0)	22.0 (±1.5)
SBF150PN10-16	150NB	6"	PN10/16	285.0 (±2.0)	240.0 (±1.0)	8x22.0 (-0.0, +1.0)	22.0 (±1.5)
SBF200PN16	200NB	8"	PN16	340.0 (±3.0)	295.0 (±1.0)	12x22.0 (-0.0, +1.0)	24.0 (±1.5)
SBF250PN16	250NB	10"	PN16	405.0 (±3.0)	355.0 (±1.0)	12x26.0 (-0.0, +1.0)	26.0 (±1.5)
SBF300PN16	300NB	12"	PN16	460.0 (±3.0)	410.0 (±1.0)	12x26.0 (-0.0, +1.0)	28.0 (±1.5)
SBF350PN16	350NB	14"	PN16	520.0 (±3.0)	470.0 (±1.0)	16x26.0 (-0.0, +1.0)	30.0 (±1.5)
SBF400PN16	400NB	16"	PN16	580.0 (±3.0)	525.0 (±1.5)	16x30.0 (-0.0, +2.5)	32.0 (±1.5)



<p><b>THE METAL COMPANY</b>                  TALK: 0508 304 316                  VIEW: www.themetalcompany.co.nz                  TYPE: sales@themetalcompany.co.nz                  VISIT: 149 Alabama Rd, Blenheim 7201, NZ</p>	FILE NAME TMC-SBFPN.DWG		CODE SBFPN10-40	SIZE 15NB (1/2") TO 400NB (16")
	AUTHOR CALEB G. - 15/02/24	FOR THE METAL COMPANY	DESCRIPTION STAINLESS STEEL BLIND FLANGE PN10/16/40 EN1092-1 TYPE 05/A EN10222-5 1.4404	
	APPROVED BRENTLY F. - 16/02/24	CO. S. FISHER & SONS		
	REVISION 1.0	SHEET A4		