

NOTES & FEATURES

MATERIAL: STAINLESS STEEL
 GRADE: F316L
 STANDARD: AS/NZ54087 NON STANDARD (**)
 MANUFACTURING PROCESS: FORGED TO ASTM A182
 SURFACE FINISH: SPIRAL GROOVE
 WORKING TEMPERATURE: SEE TABLE BELOW (*)
 WORKING PRESSURE: SEE TABLE BELOW (*)

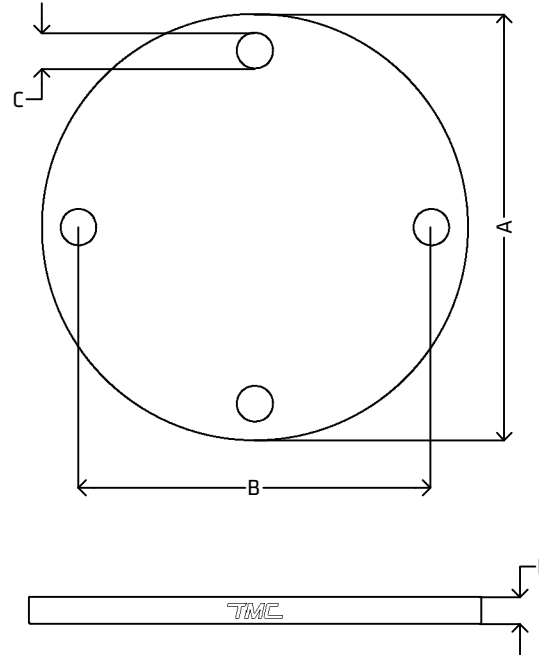
ERRORS & OMISSIONS EXCEPTED
 ALL MEASUREMENTS IN MM UNLESS STATED OTHERWISE

FEATURES:
 ALL SHARP EDGES HAVE BEEN CHAMFERED BY 0.5 MM AT 45°

(*) PRESSURE CLASS: PN16
 ALLOWABLE OPERATING PRESSURE (AOP): 16bar
 MAXIMUM ALLOWABLE OPERATING PRESSURE (MAOP): 19.2bar
 ALLOWABLE SITE TEST PRESSURE (ASTP): 20bar
 MAXIMUM ALLOWABLE TYPE TEST PRESSURE (MATTP): 24bar

(**) PLEASE NOTE THAT THESE FLANGES ARE NON STANDARD, AS THEY ARE FORGED TO ASTM A182. THIS STANDARD IS NOT OUTLINED IN AS/NZ54087, SO THESE FLANGES WILL BE DENOTED AS "NON STANDARD"

[VIEW ONLINE](#)



DIMENSIONS

CODE	METRIC	INCH	A	B	C	D
SBF50AS4087	50NB	2"	150.0	114.0 (±1.5)	4x18.0 (-0.5, +1.5)	11.0 (-0.0, +3.55)
SBF65AS4087	65NB	2 1/2"	165.0	127.0 (±1.5)	4x18.0 (-0.5, +1.5)	11.0 (-0.0, +3.55)
SBF80AS4087	80NB	3"	185.0	146.0 (±1.5)	4x18.0 (-0.5, +1.5)	11.0 (-0.0, +3.55)
SBF100AS4087	100NB	4"	215.0	178.0 (±1.5)	4x18.0 (-0.5, +1.5)	13.0 (-0.0, +3.65)
SBF150AS4087	150NB	6"	280.0	235.0 (±1.5)	8x18.0 (-0.5, +1.5)	13.0 (-0.0, +3.65)
SBF200AS4087	200NB	8"	335.0	292.0 (±1.5)	8x18.0 (-0.5, +1.5)	19.0 (-0.0, +3.95)
SBF250AS4087	250NB	10"	405.0	356.0 (±1.5)	8x22.0 (-0.5, +1.5)	19.0 (-0.0, +3.95)
SBF300AS4087	300NB	12"	455.0	406.0 (±1.5)	12x22.0 (-0.5, +1.5)	23.0 (-0.0, +4.15)
SBF350AS4087	350NB	14"	525.0	470.0 (±1.5)	12x26.0 (-0.5, +1.5)	30.0 (-0.0, +4.5)
SBF400AS4087	400NB	16"	580.0	521.0 (±1.5)	12x26.0 (-0.5, +1.5)	30.0 (-0.0, +4.5)

<p>THE METAL COMPANY</p> <p>TALK: 0508 304 316 VIEW: www.themetalcompany.co.nz TYPE: sales@themetalcompany.co.nz VISIT: 149 Alabama Rd, Blenheim 7201, NZ</p>	FILE NAME	TMC-SBFAS4087.DWG		CODE	SBFAS4087	SIZE	50NB (2") TO 400NB (16")
	AUTHOR	CALEB G. - 19/02/24	FOR	THE METAL COMPANY	DESCRIPTION		
	APPROVED	BRENTLY F. - 19/02/24	CO.	S. FISHER & SONS			
	REVISION	1.0	SHEET	A4	SCALE	NOT TO SCALE	STAINLESS STEEL BLIND FLANGE AS/NZ54087 PN16 NON STANDARD ASTM A182 F316L