

NOTES & FEATURES

MATERIAL: STAINLESS STEEL
 GRADE: 1.4404
 STANDARD: EN1092-1
 MANUFACTURING PROCESS: FORGED TO EN10222-5
 SURFACE FINISH: SPIRAL GROOVE
 WORKING TEMPERATURE: SEE TABLE BELOW (*)
 WORKING PRESSURE: SEE TABLE BELOW (*)

ERRORS & OMISSIONS EXCEPTED
 ALL MEASUREMENTS IN MM UNLESS STATED OTHERWISE

FEATURES:
 ALL SHARP EDGES HAVE BEEN CHAMFERED BY 0.5 MM AT 45°

(*) PRESSURE/TEMPERATURE RATINGS: (MAXIMUM ALLOWABLE TEMPERATURE/MAXIMUM ALLOWABLE PRESSURE)

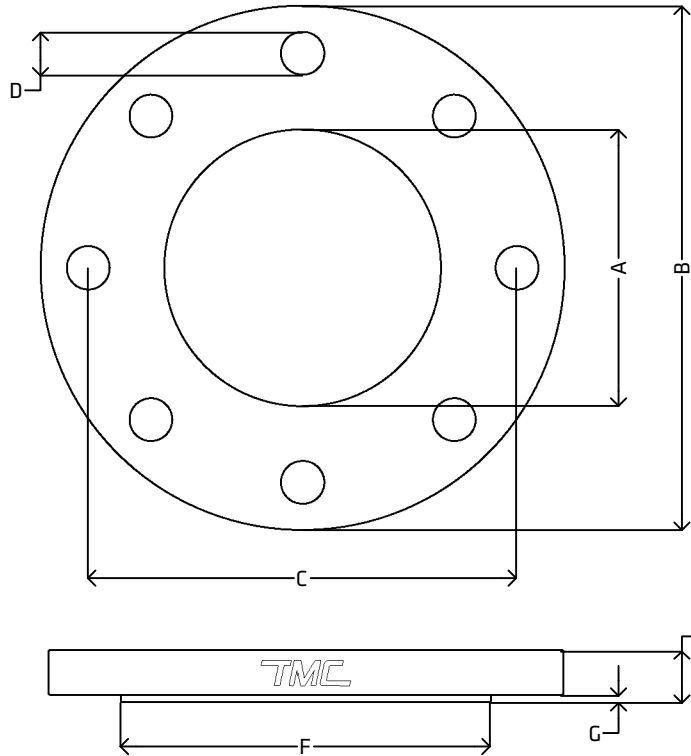
FLANGES RATED UP TO PN16:

RT: 16 bar
 100°C: 15.1 bar
 150°C: 13.7 bar
 200°C: 12.7 bar
 250°C: 11.9 bar
 300°C: 11 bar
 350°C: 10.5 bar
 400°C: 10.2 bar
 450°C: 10 bar
 500°C: 9.7 bar

FLANGES RATED UP TO PN40:

RT: 40 bar
 100°C: 37.9 bar
 150°C: 34.4 bar
 200°C: 31.8 bar
 250°C: 29.9 bar
 300°C: 27.6 bar
 350°C: 26.4 bar
 400°C: 25.7 bar
 450°C: 25 bar
 500°C: 24.3 bar

[VIEW ONLINE](#)



DIMENSIONS

CODE	METRIC	INCH	RATING	A	B	C	D	E	F	G
SPF15PN10-40	15NB	1/2"	PN10/16/40	22.0 (-0.0, +0.5)	95.0 (±2.0)	65.0 (±1.0)	4x14.0 (-0.0, +1.0)	14.0 (-1.3, +1.0)	45.0 (-1.0, +2.0)	2.0 (-1.0, +0.0)
SPF20PN10-40	20NB	3/4"	PN10/16/40	27.5 (-0.0, +0.5)	105.0 (±2.0)	75.0 (±1.0)	4x14.0 (-0.0, +1.0)	16.0 (-1.3, +1.0)	58.0 (-1.0, +2.0)	2.0 (-1.0, +0.0)
SPF25PN10-40	25NB	1"	PN10/16/40	34.5 (-0.0, +0.5)	115.0 (±2.0)	85.0 (±1.0)	4x14.0 (-0.0, +1.0)	16.0 (-1.3, +1.0)	68.0 (-1.0, +2.0)	2.0 (-1.0, +0.0)
SPF32PN10-40	32NB	1 1/4"	PN10/16/40	43.5 (-0.0, +0.5)	140.0 (±2.0)	100.0 (±1.0)	4x18.0 (-0.0, +1.0)	18.0 (-1.3, +1.0)	78.0 (-1.0, +2.0)	2.0 (-1.0, +0.0)
SPF40PN10-40	40NB	1 1/2"	PN10/16/40	49.5 (-0.0, +0.5)	150.0 (±2.0)	110.0 (±1.0)	4x18.0 (-0.0, +1.0)	18.0 (-1.3, +1.0)	88.0 (-1.0, +2.0)	3.0 (-2.0, +0.0)
SPF50PN10-16	50NB	2"	PN10/16	61.5 (-0.0, +0.5)	165.0 (±2.0)	125.0 (±1.0)	4x18.0 (-0.0, +1.0)	20.0 (±1.5)	102.0 (-1.0, +2.0)	3.0 (-2.0, +0.0)
SPF65PN10-16	65NB	2 1/2"	PN10/16	77.5 (-0.0, +0.5)	185.0 (±2.0)	145.0 (±1.0)	8x18.0 (-0.0, +1.0)	20.0 (±1.5)	122.0 (-1.0, +2.0)	3.0 (-2.0, +0.0)
SPF80PN10-16	80NB	3"	PN10/16	90.5 (-0.0, +0.5)	200.0 (±2.0)	160.0 (±1.0)	8x18.0 (-0.0, +1.0)	20.0 (±1.5)	138.0 (-1.0, +2.0)	3.0 (-2.0, +0.0)
SPF100PN10-16	100NB	4"	PN10/16	116.0 (-0.0, +0.5)	220.0 (±2.0)	180.0 (±1.0)	8x18.0 (-0.0, +1.0)	22.0 (±1.5)	158.0 (-1.0, +2.0)	3.0 (-2.0, +0.0)
SPF125PN10-16	125NB	5"	PN10/16	141.5 (-0.0, +1.0)	250.0 (±2.0)	210.0 (±1.0)	8x18.0 (-0.0, +1.0)	22.0 (±1.5)	188.0 (-1.0, +2.0)	3.0 (-2.0, +0.0)
SPF150PN10-16	150NB	6"	PN10/16	170.5 (-0.0, +1.0)	285.0 (±2.0)	240.0 (±1.0)	8x22.0 (-0.0, +1.0)	24.0 (±1.5)	212.0 (-1.0, +2.0)	3.0 (-2.0, +0.0)
SPF200PN16	200NB	8"	PN16	221.5 (-0.0, +1.0)	340.0 (±3.0)	295.0 (±1.0)	12x22.0 (-0.0, +1.0)	26.0 (±1.5)	268.0 (-1.0, +2.0)	3.0 (-2.0, +0.0)
SPF250PN16	250NB	10"	PN16	276.5 (-0.0, +1.0)	405.0 (±3.0)	355.0 (±1.0)	12x26.0 (-0.0, +1.0)	29.0 (±1.5)	320.0 (-1.0, +2.0)	3.0 (-2.0, +0.0)
SPF300PN16	300NB	12"	PN16	327.5 (-0.0, +1.0)	460.0 (±3.0)	410.0 (±1.0)	12x26.0 (-0.0, +1.0)	32.0 (±1.5)	378.0 (-1.0, +3.0)	4.0 (-3.0, +0.0)
SPF350PN16	350NB	14"	PN16	359.5 (-0.0, +1.0)	520.0 (±3.0)	470.0 (±1.0)	16x26.0 (-0.0, +1.0)	35.0 (±1.5)	438.0 (-1.0, +3.0)	4.0 (-3.0, +0.0)
SPF400PN16	400NB	16"	PN16	411.0 (-0.0, +1.0)	580.0 (±3.0)	525.0 (±1.5)	16x30.0 (-0.0, +2.5)	38.0 (±1.5)	490.0 (-1.0, +3.0)	4.0 (-3.0, +0.0)



<p>THE METAL COMPANY TALK: 0508 304 316 VIEW: www.themetalcompany.co.nz TYPE: sales@themetalcompany.co.nz VISIT: 149 Alabama Rd, Blenheim 7201, NZ</p>	FILE NAME	TMC-SPFPN.DWG		CODE	SPFPN10-40	SIZE	15NB (1/2") TO 400NB (16")
	AUTHOR	CALEB G. - 19/01/24	FOR	THE METAL COMPANY	DESCRIPTION STAINLESS STEEL PIPE FLANGE PN10/16/40 EN1092-1 TYPE 01/B1 EN10222-5 1.4404		
	APPROVED	BRENTLY F. - 23/02/24	CO.	S. FISHER & SONS			
	REVISION	1.0	SHEET	A4	SCALE	NOT TO SCALE	