

**NOTES & FEATURES**

MATERIAL: STAINLESS STEEL  
 GRADE: F316L  
 STANDARD: ASME B16.5  
 MANUFACTURING PROCESS: FORGED TO ASTM A182  
 SURFACE FINISH: SPIRAL GROOVE  
 WORKING TEMPERATURE: SEE TABLE BELOW (\*)  
 WORKING PRESSURE: SEE TABLE BELOW (\*)

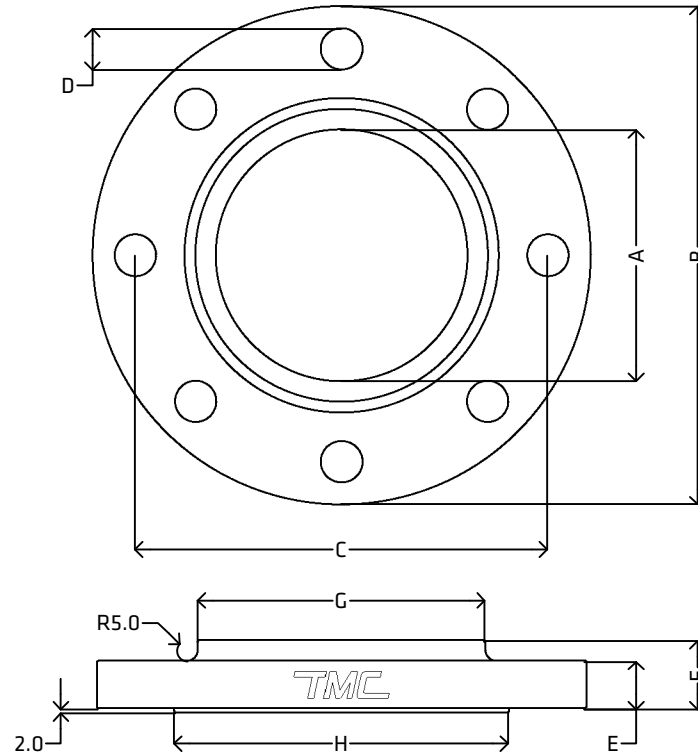
ERRORS & OMISSIONS EXCEPTED  
 ALL MEASUREMENTS IN MM UNLESS STATED OTHERWISE

FEATURES:  
 ALL SHARP EDGES HAVE BEEN CHAMFERED BY 0.5 MM AT 45°

(\*) CLASS 150 RATINGS:

-29°C to 38°C: 15.9bar  
 50°C: 15.3bar  
 100°C: 13.3bar  
 150°C: 12bar  
 200°C: 11.2bar  
 250°C: 10.5bar  
 300°C: 10bar  
 325°C: 9.3bar  
 350°C: 8.4bar  
 375°C: 7.4bar  
 400°C: 6.5bar  
 425°C: 5.5bar  
 450°C: 4.6bar

[VIEW ONLINE](#)



**DIMENSIONS**

CODE	METRIC	INCH	A	B	C	D	E	F	G	H
SPF15A150	15NB	1/2"	22.0 (-0.0, +1.0)	90.0	60.3 (±1.5)	4x15.88	9.6 (-0.0, +3.0)	14.0 (±1.5)	30.0	34.9 (±1.0)
SPF20A150	20NB	3/4"	27.7 (-0.0, +1.0)	100.0	69.9 (±1.5)	4x15.88	11.2 (-0.0, +3.0)	14.0 (±1.5)	38.0	42.9 (±1.0)
SPF25A150	25NB	1"	34.5 (-0.0, +1.0)	110.0	79.4 (±1.5)	4x15.88	12.7 (-0.0, +3.0)	16.0 (±1.5)	49.0	50.8 (±1.0)
SPF32A150	32NB	1 1/4"	43.2 (-0.0, +1.0)	115.0	88.9 (±1.5)	4x15.88	14.3 (-0.0, +3.0)	19.0 (±1.5)	59.0	63.5 (±1.0)
SPF40A150	40NB	1 1/2"	49.5 (-0.0, +1.0)	125.0	98.4 (±1.5)	4x15.88	15.9 (-0.0, +3.0)	21.0 (±1.5)	65.0	73.0 (±1.0)
SPF50A150	50NB	2"	61.9 (-0.0, +1.0)	150.0	120.7 (±1.5)	4x19.05	17.5 (-0.0, +3.0)	24.0 (±1.5)	78.0	92.1 (±1.0)
SPF65A150	65NB	2 1/2"	74.6 (-0.0, +1.0)	180.0	139.7 (±1.5)	4x19.05	20.7 (-0.0, +3.0)	27.0 (±1.5)	90.0	104.8 (±1.0)
SPF80A150	80NB	3"	90.7 (-0.0, +1.0)	190.0	152.4 (±1.5)	4x19.05	22.3 (-0.0, +3.0)	29.0 (±1.5)	108.0	127.0 (±1.0)
SPF100A150	100NB	4"	116.1 (-0.0, +1.0)	230.0	190.5 (±1.5)	8x19.05	22.3 (-0.0, +3.0)	32.0 (±1.5)	135.0	157.2 (±1.0)
SPF125A150	125NB	5"	143.8 (-0.0, +1.0)	255.0	215.9 (±1.5)	8x22.22	22.3 (-0.0, +3.0)	35.0 (-3.0, +1.5)	164.0	185.7 (±1.0)
SPF150A150	150NB	6"	170.7 (-0.0, +1.0)	280.0	241.3 (±1.5)	8x22.22	23.9 (-0.0, +3.0)	38.0 (-3.0, +1.5)	192.0	215.9 (±1.0)
SPF200A150	200NB	8"	221.5 (-0.0, +1.0)	345.0	298.5 (±1.5)	8x22.22	27.0 (-0.0, +3.0)	43.0 (-3.0, +1.5)	246.0	269.9 (±1.0)
SPF250A150	250NB	10"	276.2 (-0.0, +1.0)	405.0	362.0 (±1.5)	12x25.4	28.6 (-0.0, +3.0)	48.0 (-3.0, +1.5)	305.0	323.8 (±1.0)
SPF300A150	300NB	12"	327.0 (-0.0, +1.5)	485.0	431.8 (±1.5)	12x25.4	30.2 (-0.0, +3.0)	54.0 (-5.0, +3.0)	365.0	381.0 (±1.0)
SPF350A150	350NB	14"	359.2 (-0.0, +1.5)	535.0	476.3 (±1.5)	12x28.57	33.4 (-0.0, +3.0)	56.0 (-5.0, +3.0)	400.0	412.8 (±1.0)
SPF400A150	400NB	16"	410.5 (-0.0, +1.5)	595.0	539.8 (±1.5)	16x28.57	35.0 (-0.0, +3.0)	62.0 (-5.0, +3.0)	457.0	469.9 (±1.0)



<p><b>THE METAL COMPANY</b>                  TALK: 0508 304 316                  VIEW: www.themetalcompany.co.nz                  TYPE: sales@themetalcompany.co.nz                  VISIT: 149 Alabama Rd, Blenheim 7201, NZ</p>	FILE NAME	TMC-SPFA150.DWG		CODE	SPFA150	SIZE	15NB (1/2") TO 400NB (16")
	AUTHOR	CALEB G. - 22/01/24	FOR	THE METAL COMPANY	DESCRIPTION STAINLESS STEEL PIPE FLANGE ANS1150 ASME B16.5 ASTM A182 F316L		
	APPROVED	BRENTLY F. - 23/02/24	CO.	S. FISHER & SONS			
	REVISION	1.0	SHEET	A4	SCALE	NOT TO SCALE	