

NOTES & FEATURES

MATERIAL: STAINLESS STEEL
 GRADE: F316L
 STANDARD: ASME B16.5
 MANUFACTURING PROCESS: FORGED TO ASTM A182
 SURFACE FINISH: SPIRAL GROOVE
 WORKING TEMPERATURE: SEE TABLE BELOW (*)
 WORKING PRESSURE: SEE TABLE BELOW (*)

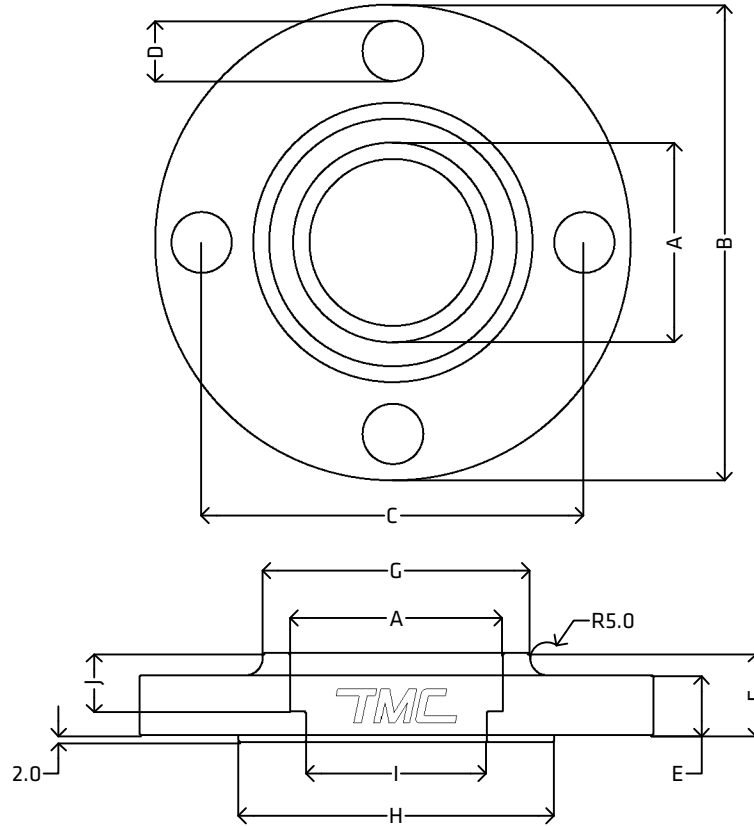
ERRORS & OMISSIONS EXCEPTED
 ALL MEASUREMENTS IN MM UNLESS STATED OTHERWISE

FEATURES:
 ALL SHARP EDGES HAVE BEEN CHAMFERED BY 0.5 MM AT 45°

(*) CLASS 150 RATINGS:

-29°C to 38°C: 15.9bar
 50°C: 15.3bar
 100°C: 13.3bar
 150°C: 12bar
 200°C: 11.2bar
 250°C: 10.5bar
 300°C: 10bar
 325°C: 9.3bar
 350°C: 8.4bar
 375°C: 7.4bar
 400°C: 6.5bar
 425°C: 5.5bar
 450°C: 4.6bar

[VIEW ONLINE](#)



DIMENSIONS												
CODE	METRIC	INCH	A	B	C	D	E	F	G	H	I	J
SPF15A150-SW	15NB	1/2"	22.0 (-0.0, +1.0)	90.0	60.3 (±1.5)	4x15.88	9.6 (-0.0, +3.0)	14.0 (±1.5)	30.0	34.9 (±1.0)	15.8	10.0
SPF20A150-SW	20NB	3/4"	27.7 (-0.0, +1.0)	100.0	69.9 (±1.5)	4x15.88	11.2 (-0.0, +3.0)	14.0 (±1.5)	38.0	42.9 (±1.0)	20.9	11.0
SPF25A150-SW	25NB	1"	34.5 (-0.0, +1.0)	110.0	79.4 (±1.5)	4x15.88	12.7 (-0.0, +3.0)	16.0 (±1.5)	49.0	50.8 (±1.0)	26.6	13.0
SPF32A150-SW	32NB	1 1/4"	43.2 (-0.0, +1.0)	115.0	88.9 (±1.5)	4x15.88	14.3 (-0.0, +3.0)	19.0 (±1.5)	59.0	63.5 (±1.0)	35.1	14.0
SPF40A150-SW	40NB	1 1/2"	49.5 (-0.0, +1.0)	125.0	98.4 (±1.5)	4x15.88	15.9 (-0.0, +3.0)	21.0 (±1.5)	65.0	73.0 (±1.0)	40.9	16.0
SPF50A150-SW	50NB	2"	61.9 (-0.0, +1.0)	150.0	120.7 (±1.5)	4x19.05	17.5 (-0.0, +3.0)	24.0 (±1.5)	78.0	92.1 (±1.0)	52.5	17.0

<p>THE METAL COMPANY TALK: 0508 304 316 VIEW: www.themetalcompany.co.nz TYPE: sales@themetalcompany.co.nz VISIT: 149 Alabama Rd, Blenheim 7201, NZ</p>	FILE NAME TMC-SPFA150-SW.DWG		CODE SPFA150-SW	SIZE 15NB (1/2") TO 50NB (2")
	AUTHOR CALEB G. - 23/01/24	FOR THE METAL COMPANY	DESCRIPTION STAINLESS STEEL SOCKET WELD PIPE FLANGE ANSI150 ASME B16.5 ASTM A182 F316L	
	APPROVED BRENTLY F. - 23/02/24	CO. S. FISHER & SONS		
	REVISION 1.0	SHEET A4	SCALE NOT TO SCALE	