

NOTES & FEATURES

MATERIAL: STAINLESS STEEL
 GRADE: F316L
 STANDARD: ASME B16.5
 MANUFACTURING PROCESS: FORGED TO ASTM A182
 SURFACE FINISH: SPIRAL GROOVE
 WORKING TEMPERATURE: SEE TABLE BELOW (*)
 WORKING PRESSURE: SEE TABLE BELOW (*)

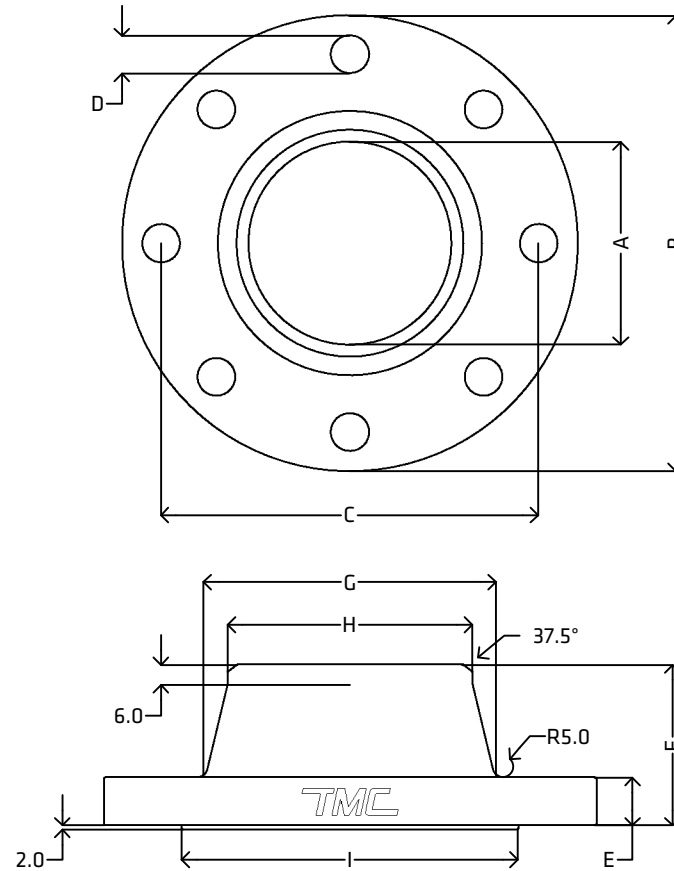
ERRORS & OMISSIONS EXCEPTED
 ALL MEASUREMENTS IN MM UNLESS STATED OTHERWISE

FEATURES:
 ALL SHARP EDGES HAVE BEEN CHAMFERED BY 0.5 MM AT 45°

(*) CLASS 150 RATINGS:

-29°C to 38°C: 15.9bar
 50°C: 15.3bar
 100°C: 13.3bar
 150°C: 12bar
 200°C: 11.2bar
 250°C: 10.5bar
 300°C: 10bar
 325°C: 9.3bar
 350°C: 8.4bar
 375°C: 7.4bar
 400°C: 6.5bar
 425°C: 5.5bar
 450°C: 4.6bar

[VIEW ONLINE](#)



DIMENSIONS											
CODE	METRIC	INCH	A	B	C	D	E	F	G	H	I
SPF15A150S40-WN	15NB	1/2"	15.8 (±1.0)	90.0	60.3 (±1.5)	4x15.88	9.6 (-0.0, +3.0)	46.0 (±1.5)	30.0	21.3 (-1.0, +2.0)	34.9
SPF20A150S40-WN	20NB	3/4"	20.93 (±1.0)	100.0	69.9 (±1.5)	4x15.88	11.2 (-0.0, +3.0)	51.0 (±1.5)	38.0	26.7 (-1.0, +2.0)	42.9
SPF25A150S40-WN	25NB	1"	26.64 (±1.0)	110.0	79.4 (±1.5)	4x15.88	12.7 (-0.0, +3.0)	54.0 (±1.5)	49.0	33.4 (-1.0, +2.0)	50.8
SPF32A150S40-WN	32NB	1 1/4"	35.05 (±1.0)	115.0	88.9 (±1.5)	4x15.88	14.3 (-0.0, +3.0)	56.0 (±1.5)	59.0	42.2 (-1.0, +2.0)	63.5
SPF40A150S40-WN	40NB	1 1/2"	40.89 (±1.0)	125.0	98.4 (±1.5)	4x15.88	15.9 (-0.0, +3.0)	60.0 (±1.5)	65.0	48.3 (-1.0, +2.0)	73.0
SPF50A150S40-WN	50NB	2"	52.5 (±1.0)	150.0	120.7 (±1.5)	4x19.05	17.5 (-0.0, +3.0)	62.0 (±1.5)	78.0	60.3 (-1.0, +2.0)	92.1
SPF65A150S40-WN	65NB	2 1/2"	62.71 (±1.0)	180.0	139.7 (±1.5)	4x19.05	20.7 (-0.0, +3.0)	68.0 (±1.5)	90.0	73.0 (-1.0, +2.0)	104.8
SPF80A150S40-WN	80NB	3"	77.93 (±1.0)	190.0	152.4 (±1.5)	4x19.05	22.3 (-0.0, +3.0)	68.0 (±1.5)	108.0	88.9 (-1.0, +2.0)	127.0
SPF100A150S40-WN	100NB	4"	102.26 (±1.0)	230.0	190.5 (±1.5)	8x19.05	22.3 (-0.0, +3.0)	75.0 (±1.5)	135.0	114.3 (-1.0, +2.0)	157.2



<p>THE METAL COMPANY TALK: 0508 304 316 TYPE: sales@themetalscompany.co.nz VISIT: 149 Alabama Rd, Blenheim 7201, NZ</p>	FILE NAME	TMC-SPFA150S40-WN.DWG		CODE	SPFA150S40-WN		SIZE	15NB (1/2") TO 100NB (4")		
	AUTHOR	CALEB G. - 26/01/24	FOR	THE METAL COMPANY		DESCRIPTION	STAINLESS STEEL WELD NECK PIPE FLANGE SCH40S ANSI150 ASME B16.5 ASTM A182 F316L			
	APPROVED	BRENTLY F. - 23/02/24	CO.	S. FISHER & SONS		REVISION	1.0	SHEET	A4	
	SCALE	NOT TO SCALE								