

NOTES & FEATURES

MATERIAL: CARBON STEEL Q235
 STANDARD: SUITS AS2129
 MANUFACTURING PROCESS: HOT DIPPED GALVANIZED
 WORKING TEMPERATURE: SEE TABLE BELOW (*)
 WORKING PRESSURE: SEE TABLE BELOW (*)

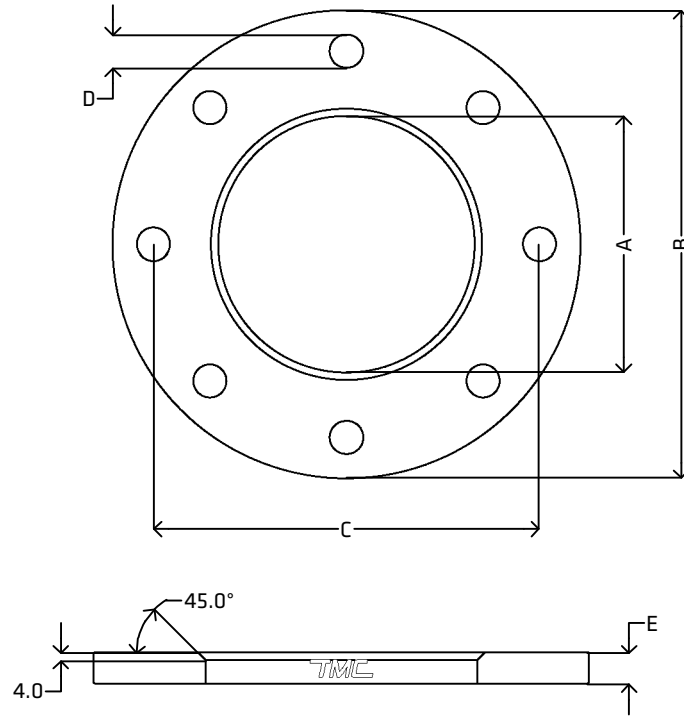
ERRORS & OMISSIONS EXCEPTED
 ALL MEASUREMENTS IN MM UNLESS STATED OTHERWISE

FEATURES:
 ALL SHARP EDGES HAVE BEEN CHAMFERED BY 0.5 MM AT 45°

(*) PRESSURE/TEMPERATURE RATINGS ARE UNAVAILABLE FOR THIS PRODUCT. PLEASE CONTACT SALES FOR FURTHER INFORMATION.

PLEASE NOTE THAT 203.2 (8") AND LARGER SUIT SPIRAL WELD TUBE (ID TUBE) SIZING.

[VIEW ONLINE](#)



DIMENSIONS

CODE	METRIC	INCH	A	B	C	D	E
GTBF25DE	25.4	1"	33.0	114.3	82.6	4x14.0	8.0
GTBF30DE	31.8	1 1/4"	38.0	120.7	87.3	4x14.0	8.0
GTBF40DE	38.1	1 1/2"	46.0	133.3	98.4	4x14.0	10.0
GTBF50DE	50.8	2"	58.0	152.4	114.3	4x18.0	10.0
GTBF65DE	63.5	2 1/2"	71.0	165.1	127.0	4x18.0	10.0
GTBF75DE	76.2	3"	84.0	184.1	146.0	4x18.0	12.0
GTBF125DE	127.0	5"	139.0	254.0	209.5	8x18.0	16.0
GTBF150E	152.4	6"	166.0	279.4	234.9	8x22.0	16.0
GTBF200E	203.2 ID	8"	217.0	336.6	292.1	8x22.0	20.0
GTBF250E	254.0 ID	10"	270.0	405.0	356.0	12x22.0	20.0
GTBF300E	304.8 ID	12"	320.0	455.0	406.0	12x26.0	25.0
GTBF350E	355.6 ID	14"	375.0	525.0	470.0	12x26.0	32.0
GTBF400E	406.4 ID	16"	425.0	580.0	521.0	12x26.0	32.0

<p>THE METAL COMPANY TALK: 0508 304 316 VIEW: www.themetalcompany.co.nz TYPE: sales@themetalcompany.co.nz VISIT: 149 Alabama Rd, Blenheim 7201, NZ</p>	FILE NAME	TMC-GTBF.DWG		CODE	GTBF	SIZE	25.4 (1") TO 406.4 (16")
	AUTHOR	CALEB G. - 10/01/24	FOR	THE METAL COMPANY	DESCRIPTION GALVANISED (HDG) TUBE BACKING RING TABLE D/E MATCHES AS2129 STUD PATTERN SUITABLE FOR USE WITH TUBE NECK RINGS		
	APPROVED	BRENTLY F. - 23/02/24	CO.	S. FISHER & SONS			
	REVISION	1.0	SHEET	A4	SCALE	NOT TO SCALE	